



Society for Clinical Data Management  
DATA DRIVEN

Theme:  
Capabilities | Collaboration |  
Change on the way to Clinical Data Science

# SCDM **Live**

## India conference

2<sup>nd</sup> - 3<sup>rd</sup> December 2022  
Radisson Blu Hotel, Bengaluru



## THIRD PARTY VENDOR DATA MANAGEMENT- COLLABORATION STRATEGIES

### Presenters:

Prateek Sharma, Global DML AstraZeneca

Sandhya Raghu, Global DML AstraZeneca



Collaboration

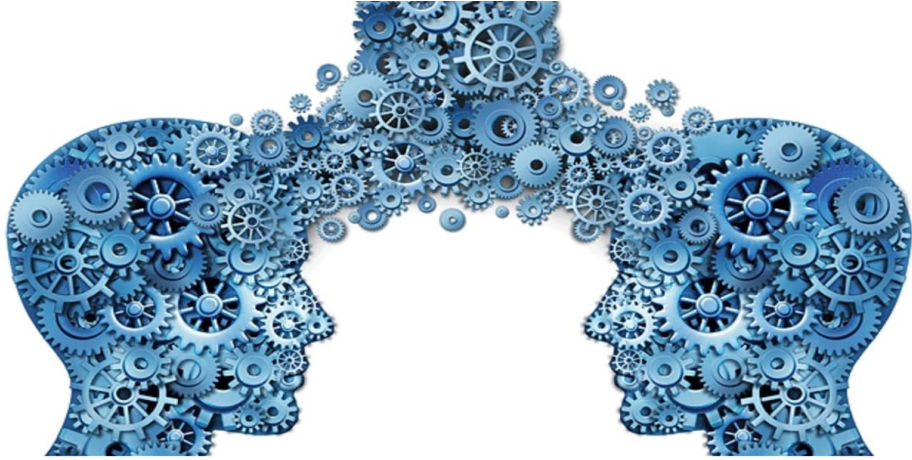
Advantage

Challenges

Opportunities

Q&A

INDEX



A working practice whereby individuals work together for a common purpose to achieve business benefit.

# COLLABORATION



# ADVANTAGE OF COLLOBORATION

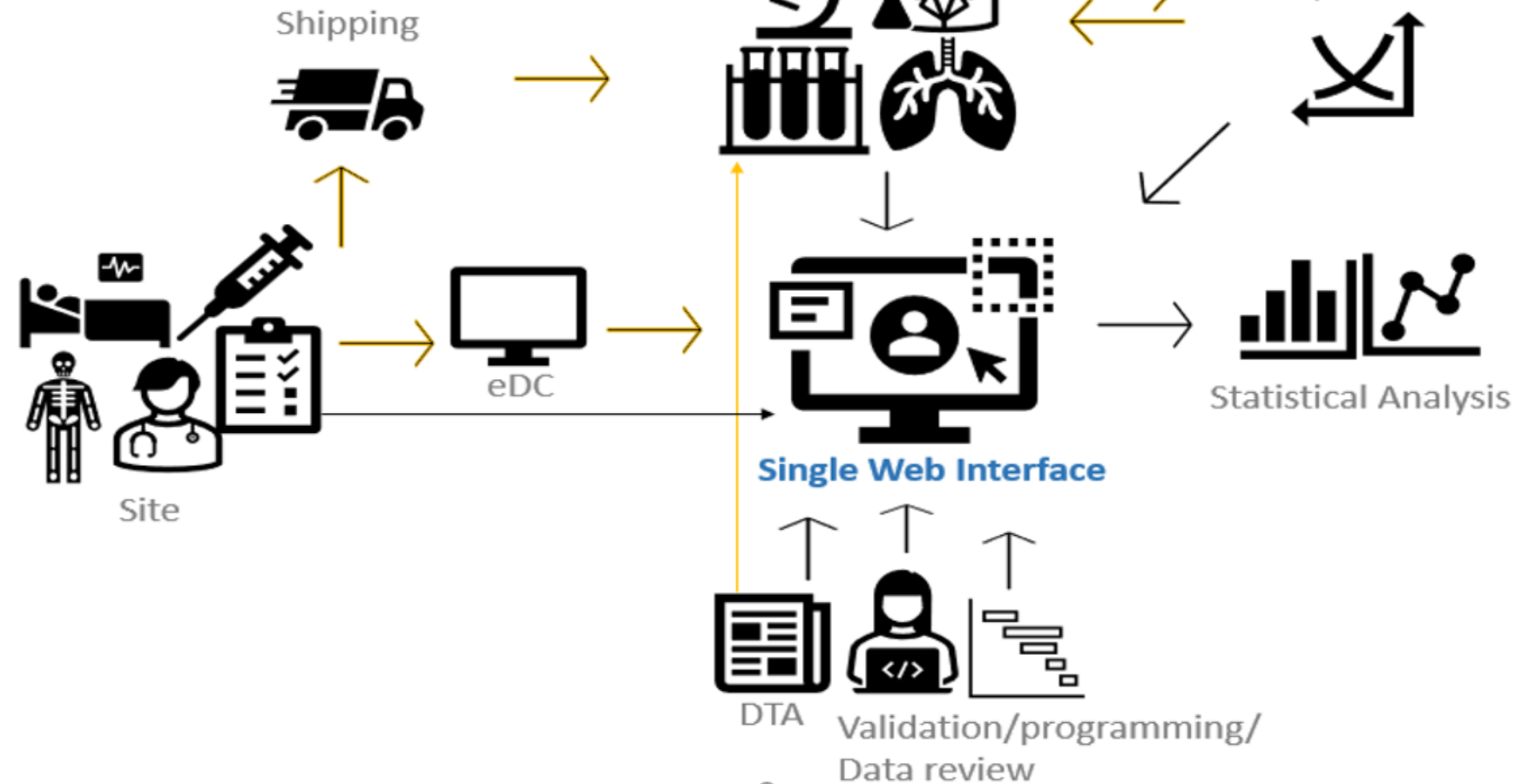


# COLLOBORATION CHALLENGES





# OPPORTUNITIES



Creating a Single Web Interface tool which can get all the stakeholders onboarded together, right from DTA creation, through the finalizing of the data at DBL.



Authentications and  
authorizations.

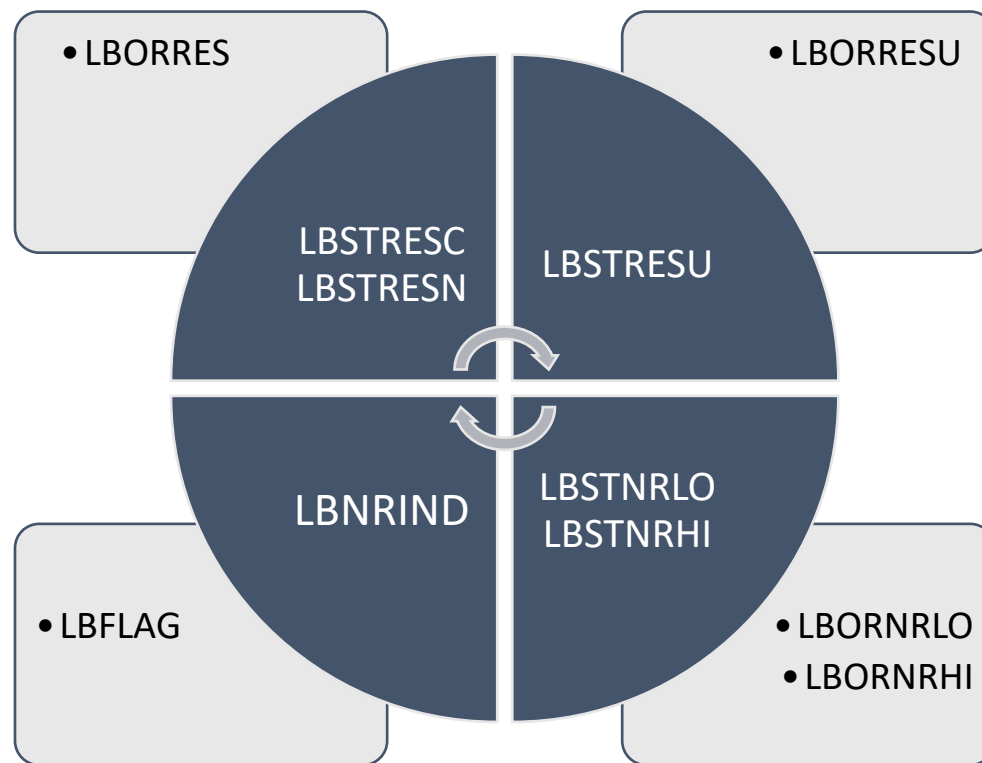
Since it is single entry  
point, we must ensure  
system is up and  
running.

It should be scalable  
and should be able to  
handle more requests.

Blinding privileges to  
be considered as  
applicable.

# Few considerations for Single Web Interface

In SDTMIG the domain specification uses variables which can be directly defined in the DTA as a result of which these variables can be directly mapped to SDTM datasets without any processing post the data is received.



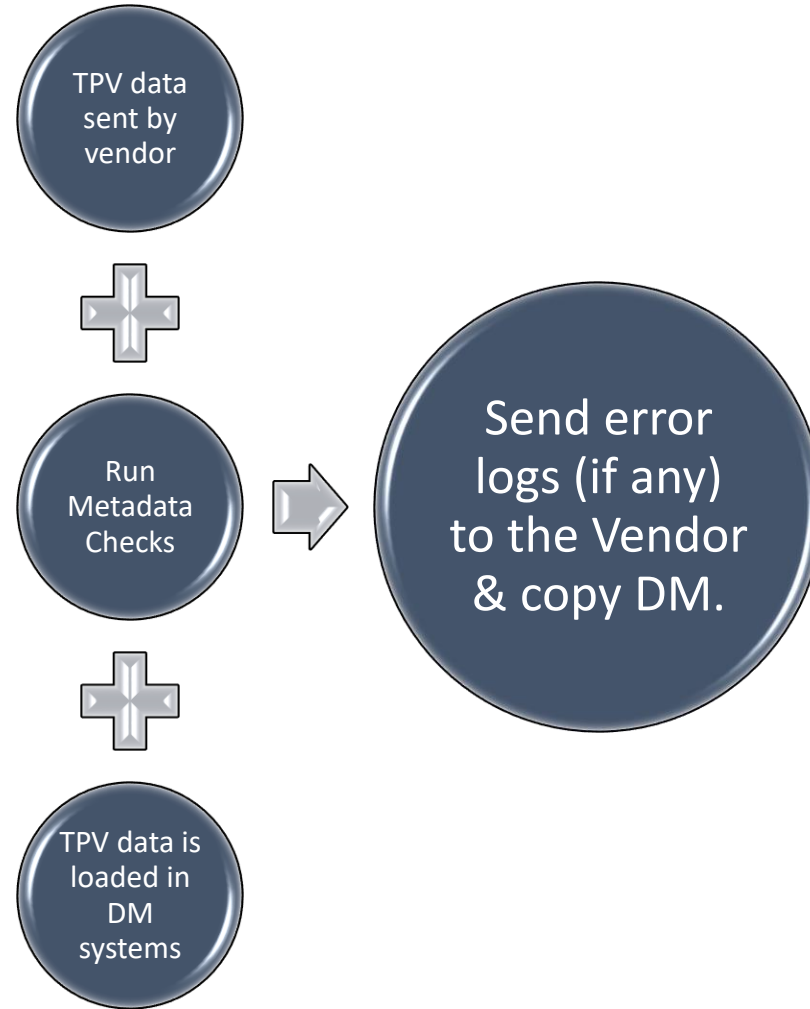
LBORRES (Result or Finding in Original Units) can be converted in their standard values.

LBORRESU (Original Units) can be converted in standard units.

LBFLAG provided by some vendors can be mapped to variable LBNRIND (Reference Range Indicator) per SDTM standards.

Similarly Variables like EPOCH, VISITNUM, VISIT can be defined directly from TV domain in DTS

Structuring variables in DTA templates as per SDTM standards at the start to minimize the data processing for SDTM conversions.



Robust servers to perform metadata checks as soon as the data is received from vendor and let the data flow at next staging area only if it is compliant.

## Programmer Site DM



Over the years it has been observed that Pinnacle 21 checks are performed towards the end of study.

Concentration and Light	
Transmittance (%)	
Trial #2	Trial #3
74.50	64.88
92.82	78.91
100.05	73.66
100.05	68.29
117.18	71.01
15.40	65.77

Most of the data issues observed in the output has resulted in updating the source data (i.e., CRF data or Vendor data).



The TAT of the fixing of vendor data is the highest and at the time of DBL most challenging.



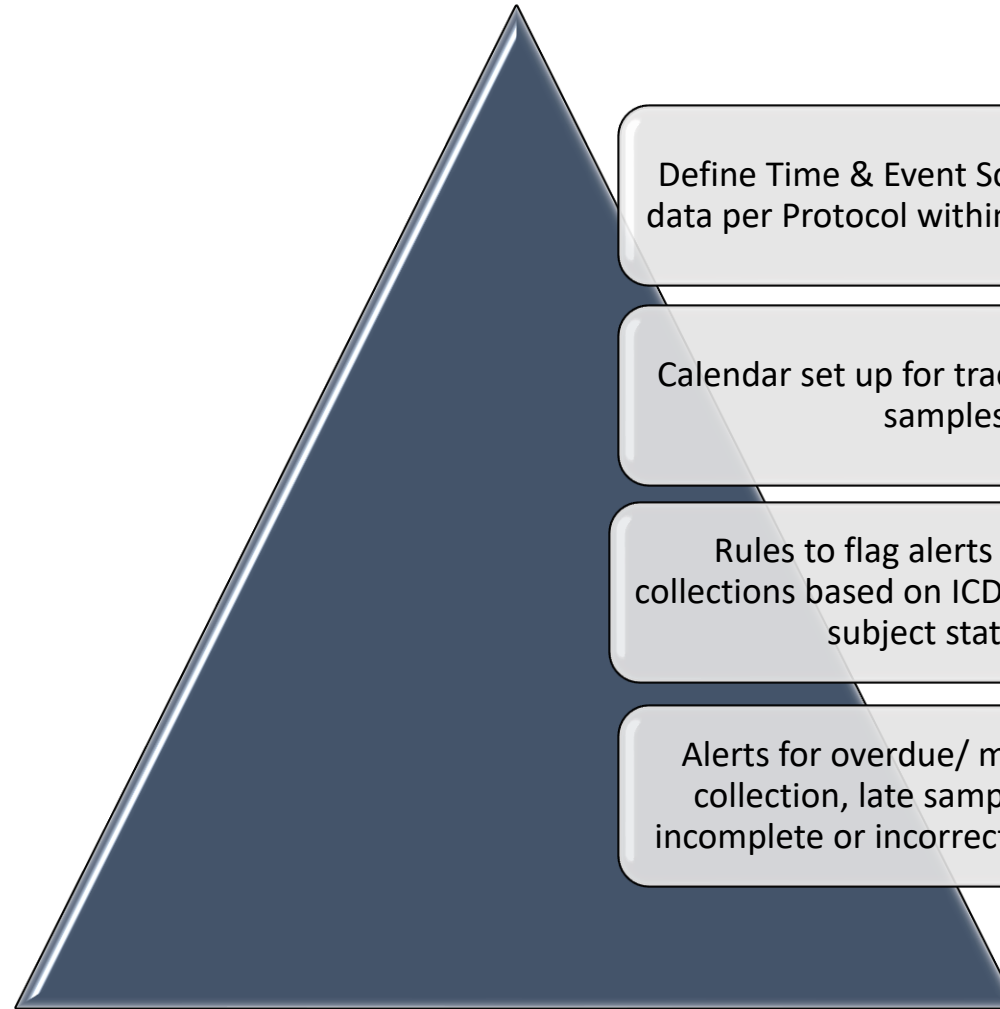
30-40% of the Pinnacle checks can be directly checked in the source data before it is converted into the SDTM datasets.



Hence proactively designing these checks at the server level will have a great impact on the data quality.

Performing the pinnacle 21 checks at the server level to make sure Submission critical errors are caught at the right time.

TPV  
Programmer  
DM  
Site



Define Time & Event Schedule for TPV data per Protocol within Web Interface.

Calendar set up for tracking visits and samples

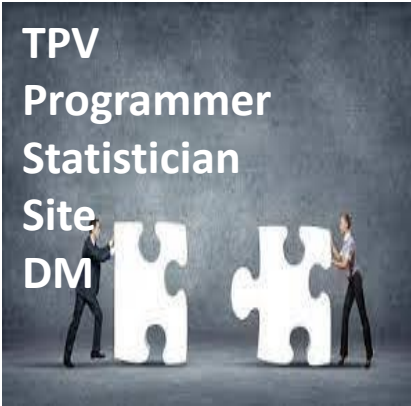
Rules to flag alerts on sample collections based on ICD, visit dates and subject status.

Alerts for overdue/ missing sample collection, late sample collection, incomplete or incorrect sample details



Predictive analysis to predict the next expected samples and flagging it in advance. Like Visit Calendar and Overdue features as in Rave database





Usual data expected post DBL are results for PK, Pharmacogenetics, Exploratory.

During conduct, we need to ensure structural/ header validation are performed rightly per DTA DM along with programmers.

Dry run data with dummy results to be transferred to DM prior to DBL to ensure there are no issues encountered post DBL.

During Dry run check with Bio statistician, programmer about the datasets, as sometimes it involves merging of datasets which may have impact in data.

Thorough validation in collaboration with programmers, data reviewers for data review and reconciliations with TPV support plays a major step to avoid future complexities.

Robust validations prior to final DBL for unblinded data which is critical and time bound





*Prateek Sharma, Data Manangement CDI,  
Development Operations, R&D, AstraZeneca,  
Bengaluru, India*

*Sandhya Raghu, Data Management CDI,  
Development Operations, R&D, AstraZeneca,  
Bengaluru, India*

# AFFILIATIONS